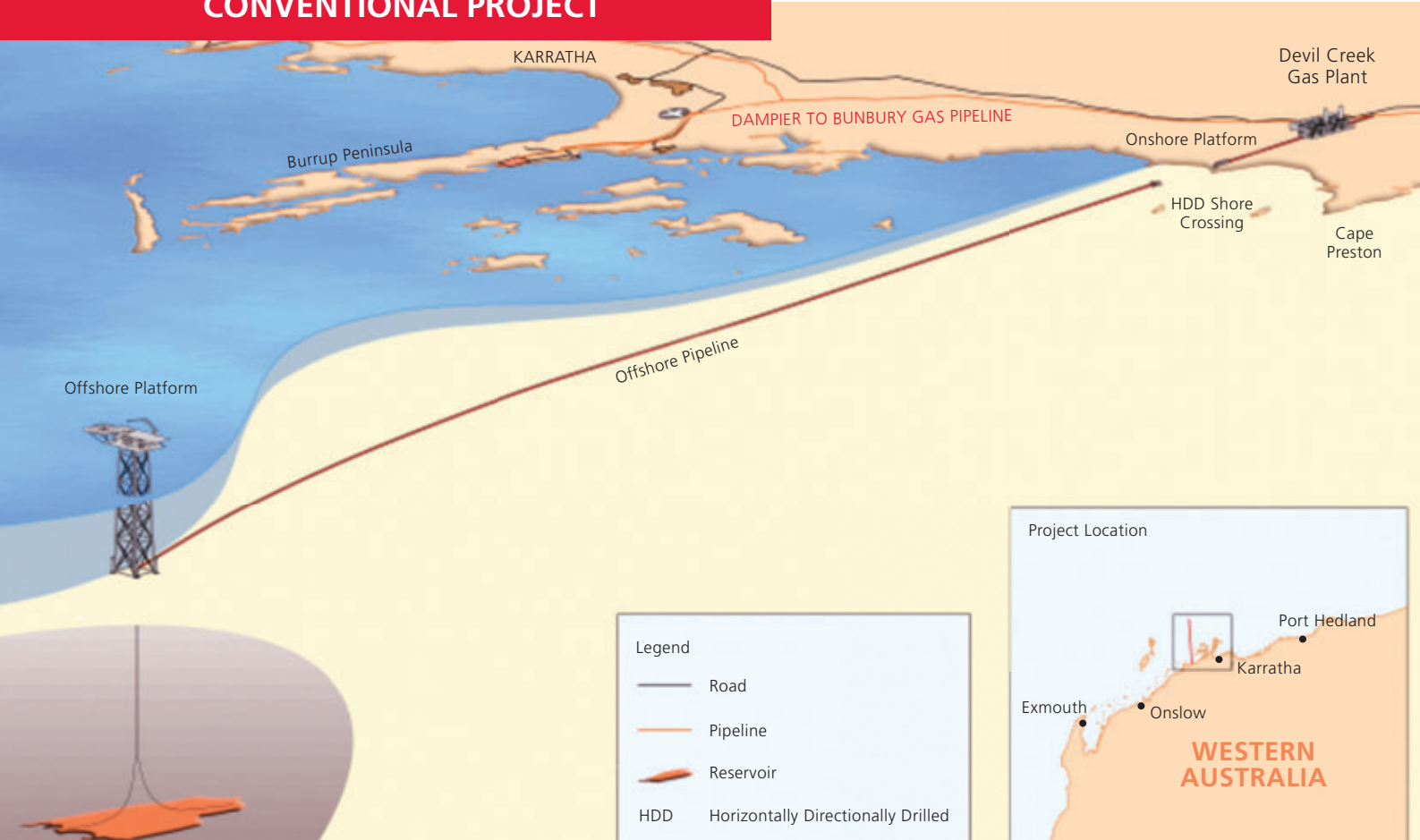


## CONVENTIONAL PROJECT



# Devil Creek Development Project from Apache Energy Ltd in Australia

## Introduction

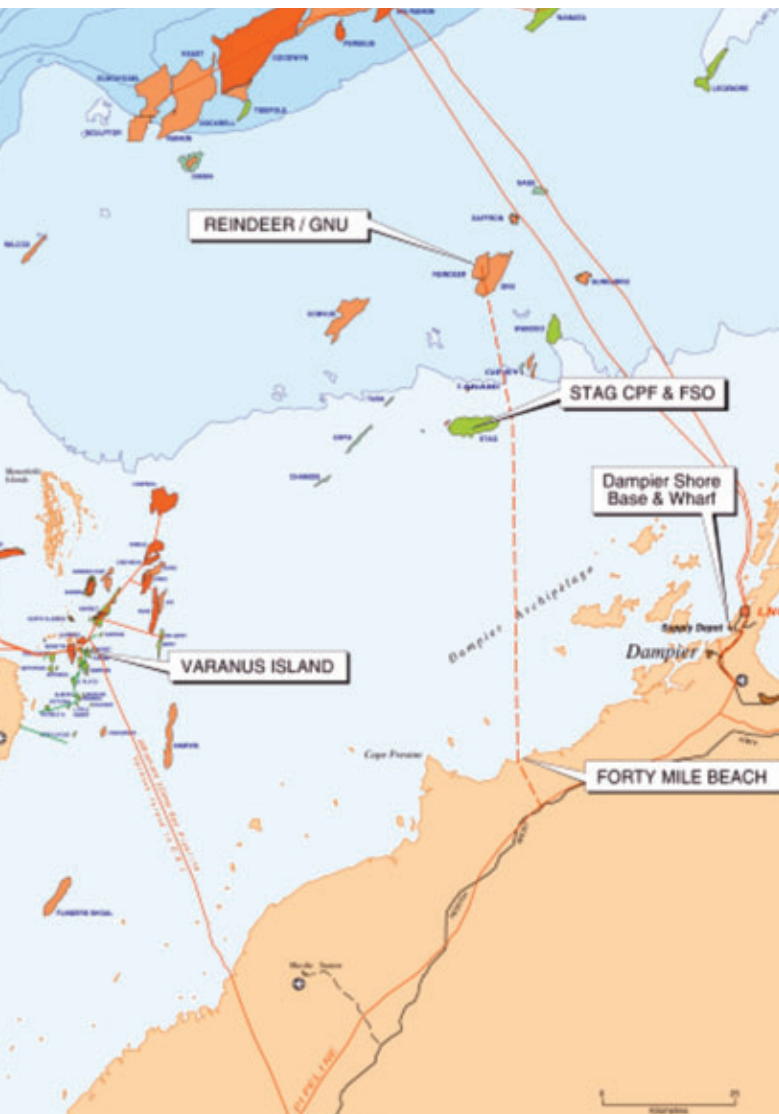
The Devil Creek Development Project is a greenfield gas development which is located approximately 80km northwest of Dampier Port off the coast of Western Australia.

The project comprises of an offshore gas production platform, an onshore and offshore gas supply pipeline, a gas processing plant and gas export pipeline tied into the Dampier-to-Bunbury Natural Gas Pipeline.

SapuraAcergy was awarded the offshore pipeline and platform installation. The Scope of Work includes the transportation and the installation of an unmanned wellhead platform comprising of a four-legged jacket and topside; together with a single 16" x 91km raw gas pipeline which will link the wellhead platform to the onshore gas plant.

## Project Fact Sheet

<b>Project Name</b>	: Devil Creek Development Project
<b>Location</b>	: Approximately 80km northwest of Dampier Port, North West Shelf, Australia
<b>Client</b>	: Apache Energy Ltd.
<b>Contract Type</b>	: Main Contractor for the Offshore Transport and Installation Works
<b>Water Depth</b>	: Circa 60m
<b>Project Duration</b>	: Offshore commencement: September 2010 Offshore duration: circa 95 days (25 days shallow water pipelay, 62 days Sapura 3000, 8 days stabilisation)
<b>Vessel Utilised</b>	: Sapura 3000
<b>Scope of Work</b>	: <ul style="list-style-type: none"><li>• Project management</li><li>• Industrial Relations (IR) management</li><li>• Transport &amp; installation engineering</li><li>• Interfacing with clients other vendors</li><li>• Transportation of client-provided materials</li><li>• Fabrication of rigid tie-in spools</li><li>• Offshore installation and testing</li><li>• Mob &amp; demob of installation activities</li><li>• As-built survey and as-built report</li></ul>



Field Location

## Project Overview

The Devil Creek Development Project (DCDP) has been initiated to recover and process the gas reserves from the Reindeer gas field located approximately 90km northwest of the Dampier Port at water depth of 60m.

The offshore installation activities comprise of:

- 16" x 91km pipeline
- Pipeline stabilisation (45 x Rocks Bolts)
- Wellhead Platform (1700Te drilled/grouted piled jacket + 450Te Topside)
- SSIV structure c/w protection frame
- Tie-in spools
- Tie-in spool stabilisation (gravity anchors)
- Umbilical and umbilical stabilisation (mattresses)
- Umbilical protection frame
- Pre-commissioning

The project will span a period of 15 months, including 3 months of offshore installation work. Preliminary planning and engineering work has already begun in Kuala Lumpur and in Perth. Offshore installation work is due to commence in late 2010, utilising the Sapura 3000. Sapura 3000 will perform the heavy lifting, pipelaying and subsea tie-in work.